



LegalTech

PUBLISHING

IN PARTNERSHIP
WITH

ABOVE
THE LAW

eDISCOVERY

BUYER'S GUIDE: 2021 EDITION



IPRO

Get a Handle on eDiscovery Data Early, Reduce Costs, and Improve Outcomes with IPRO discovery] [Enterprise

“Configure templates with custom workflows, coding forms, and tag palettes. Reviewers can access their review sets with one mouse click.”

Company Name Brand
IPRO LLC

Product Name Brand(s)
IPRO discovery] [Enterprise, IPRO assess] [HOLD

Latest Developments and Updates

- IPRO discovery] [Enterprise’s modern document review interface makes it easy to view and tag relevant documents.
- Enhanced visual search interface makes complex searching easy with an interactive experience and requires no training.
- Advanced Assisted Review AI enables reviews to be served up with the most relevant documents.
- Compare Similar allows for quick identification and comparison of near-duplicate documents.
- IPRO discovery] [Enterprise features added support for single sign-on (SSO) and two-factor authentication (2FA).

- Added connectors for Slack, Teams, and Gmail.
- Full integration of IPRO assess] [HOLD and IPRO discovery] [Enterprise.

Handle Increasing Volumes of Data

Unstructured data grows dramatically from the increased use of collaboration and file-sharing platforms as well as the work-from-anywhere trend. The expanding volume includes increasingly complex and diverse data, making it hard to use traditional eDiscovery software. Get a handle on hard-to-understand data early, control litigation costs, and reach better, faster outcomes with IPRO discovery] [Enterprise.

Getting the Process Started

The IPRO brand has long been known in eDiscovery circles for value and exceptional data processing. IPRO discovery] [Enterprise continues that tradition, extending its value in eDiscovery and investigations across the

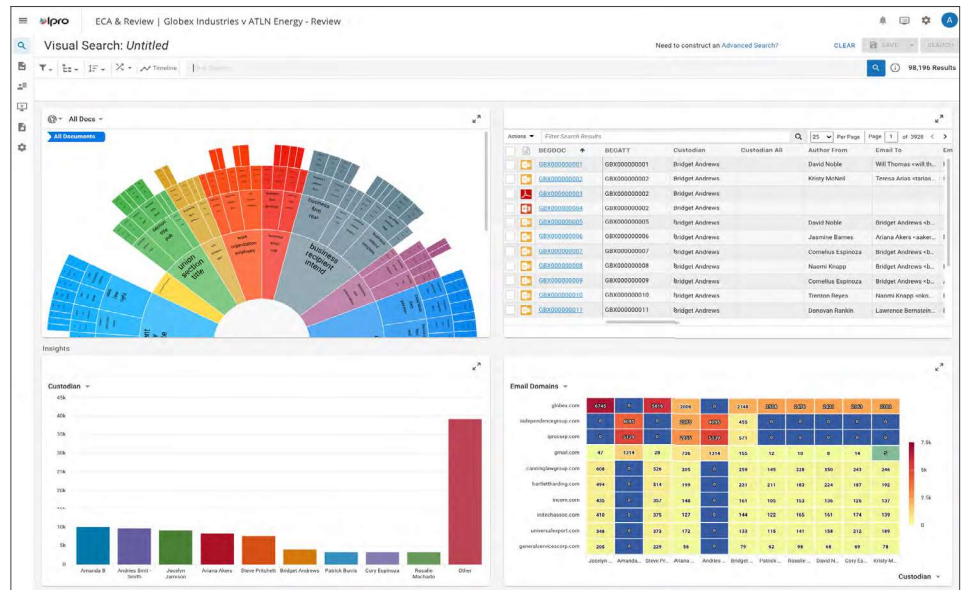


Figure 1: IPRO builds analytics into document review, allowing you to develop complex queries from visual graphics of concept clusters and communication heat maps.

“ You can visually interact with dynamic charts and graphics to get deep insight into concepts, related data, and communication patterns.”

“ You can view document metadata, apply a filter to any field, compare documents side-by-side to view similar and dissimilar content, and bulk tag documents as responsive.”

Electronic Discovery Reference Model (EDRM) from collection to production.

IPRO assess][HOLD connects with an organization’s data stores and indexes content in place, allowing you to search and cull data before it is even collected. The index serves as a data map with information on where data is, why it’s there, how long it’s been there, and who has access to read and modify it. The data map reports all stored data, including personally identifiable information (PII) and personal health information (PHI).

Indexed content serves as an ingestion point to see the data before collection and then promoting selected data to eDiscovery processing. Users can also securely upload case data to a self-serve portal to processes hundreds of file-types, de-NIST data, and deduplicate by the custodian, or globally, using unique hash codes. A job manager provides visibility into data processing, where you can prioritize jobs and easily manage exceptions. When you promote live data to eDiscovery processing, the base metadata, comprising 30 fields, expands to hundreds while IPRO discovery][Enterprise extracts all metadata and embedded documents, adding valuable insight into your collected data.

Review with Advanced Analytics
IPRO discovery][Enterprise builds advanced analytics into its template-driven document review. Configure templates with custom workflows, coding forms, and tag palettes. Reviewers can access their review sets with one mouse click.

IPRO discovery][Enterprise’s review interface features a panel of analytic

document features, including document family, duplicates, near-duplicates, email threads, similar documents, and history.

Advanced analytics help build complex searches with a few mouse clicks. You can visually interact with dynamic charts and graphics to get deep insight into concepts, related data, and communication patterns. A visual concept wheel uses machine learning to analyze documents and cluster them into groups of related documents. While reviewing the concept clusters, add them to search queries with a click and send the results to reviewers. *See Figure 1 on the previous page.*

Enterprise analytics detect multiple languages to support review resource planning. It displays a bar chart of people related to the matter and a heat map of their communication patterns. When you find a pattern of interest, add it to your search strategy with a mouse click. View a list of search results and act on selected items, such as tagging them for further review or looking at them individually.

The document viewer pops out for dual monitor support. You can view document metadata, apply a filter to any field, compare documents side-by-side to view similar and dissimilar content, and bulk tag documents as responsive. A fully customizable review panel displays on the right to tag documents and assign field values. Move to the next record, and IPRO saves the changes and presents the subsequent document. While reviewing documents, produce images on the fly and redact privileged or other information. *See Figure 2.*

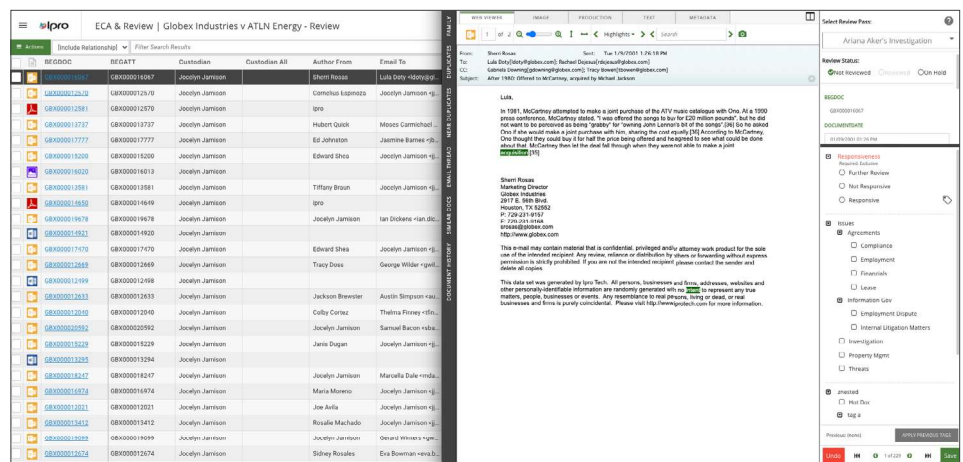


Figure 2: IPRO discovery][Enterprise’s modern document review interface requires little training to derive value, driving user adoption.

Active Learning

IPRO discovery][Enterprise supports **active learning** as a background process. The software trickles up documents most likely relevant to the matter and continuously updates precision and recall scores. View the scores in real-time, set goals and timetables, and determine how long before you achieve them. See *Figure 3*.

There's a single pane of glass for document review. You can invite internal resources and outside counsel to look at the data simultaneously on the same platform.

Production

IPRO discovery][Enterprise production uses the software's processing engine. Production workflows support templates to produce eDiscovery data consistent with court orders, Freedom of Information Act (FOIA) requests, and regulatory investigations by the Department of Justice, the Securities and Exchange Commission, and other regulatory agencies. Use TIFF, PDF, extracted text, OCR, or native document formats in an export set and apply custom Bates numbering.

Redact privileged and private information and burn-in and validate the redactions. IPRO discovery][Enterprise supports a user-friendly quality control process and a facility to export data sets to directly create load files for other review tools, including a Concordance DAT file, Opticon OPT file, and a Ringtail database. You have

complete control of the various fields in an export set, including endorsements and endorsement mappings. Save exports to templates for future use.

Deployment and Pricing

IPRO discovery][Enterprise can be deployed on-premises, in a private cloud, in the Microsoft Azure cloud, using Amazon Web Services (AWS), in the Google Cloud, or by utilizing a hybrid deployment. The software supports transferring virtual machines from on-premises to cloud architecture and back. The Enterprise software has two cloud offerings: Software-as-a-Service (SaaS) eDiscovery and Infrastructure-as-a-Service (IaaS). The IaaS is a client-administered environment best suited as a managed service for large, multiple, or long-running cases. The SaaS is an IPRO-assisted service best suited for traditional eDiscovery services and firms that need assistance. Enterprise is priced on the capabilities customers require.

On-premises deployments are priced by processing engine (worker) and review users. SaaS is per gigabyte per project, and IaaS is an annual subscription bundling the software, environment, and storage.

Who is IPRO?

Since 1989, IPRO has been a litigation and eDiscovery partner to law firms, corporate legal departments, and government agencies. The company has more than 3,000 active customers—47 of them have

cases with over 47 million records in review; one client has processed over 11 petabytes of data using IPRO's tools. IPRO integrated its discovery software with Trial Director in 2019. IPRO is headquartered in Tempe, Arizona, with offices in Henderson, Nevada; Montreal, Quebec; and Idstein, Germany. In July 2020, IPRO acquired NetGovern, extending its product reach to include information governance solutions. The company **recently acquired** Amsterdam-based Zylab, extending its eDiscovery software in legal hold automation, advanced analytics, and cloud services. Including Zylab, IPRO has more than 300 employees.

Why Buy IPRO?

- Deploy IPRO assess][HOLD and discovery][Enterprise on-premises, in the cloud, or as a hybrid solution.
- Indexing data in place makes for smart collections and eDiscovery data maps that facilitate information management and archiving.
- Active learning increases IPRO's usability, user adoption, and time to value by decreasing training and eliminating inefficient workflows.
- Built-in analytics make complex searching easy and accelerates document review.

Try IPRO Today!

Move upstream with IPRO and gain insights far earlier in your eDiscovery processes. [Learn More](#)

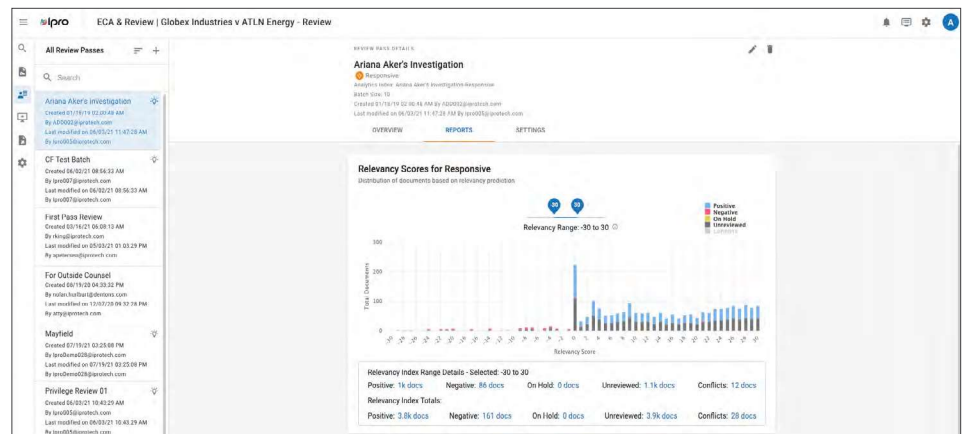


Figure 3: Always on, IPRO discovery][Enterprise active learning continuously updates relevancy scores for responsiveness, giving you real-time data on review quality and time to completion.

Thank you for reading, let's keep in touch!

We appreciate the time you spent researching solutions for your law firm. New products, feature updates, and announcements happen throughout the year. So, to help you stay informed we have expanded Legal Tech Publishing's Buyer's Guide Series to include an eBook for nearly every product category. Subscribe to receive notifications when a new guide is released. Follow us on the channels below for updates and special virtual events.



Subscribe to our Vimeo Channel



Follow us on Twitter



Like us on Facebook



Follow us on LinkedIn



This buyer's guide is supported by vendor sponsorships. The products and services selected for the guide are done at the author's discretion. Reviews are also written to reflect the opinion of the author. Each product or service must first be selected for the guide, then invited for inclusion before sponsorship is requested. Additionally, emerging technologies who do not have funding to pay for sponsorship are included based on the level of value they offer to law firms. All sponsorship proceeds go towards the costs associated with the production and distribution of the guide.

legaltechpublishing.com